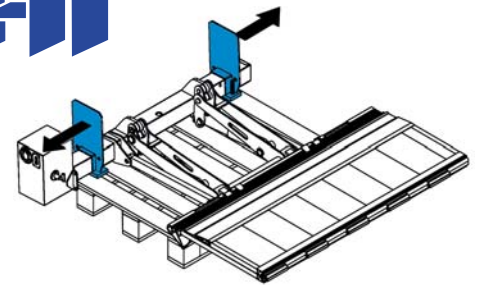
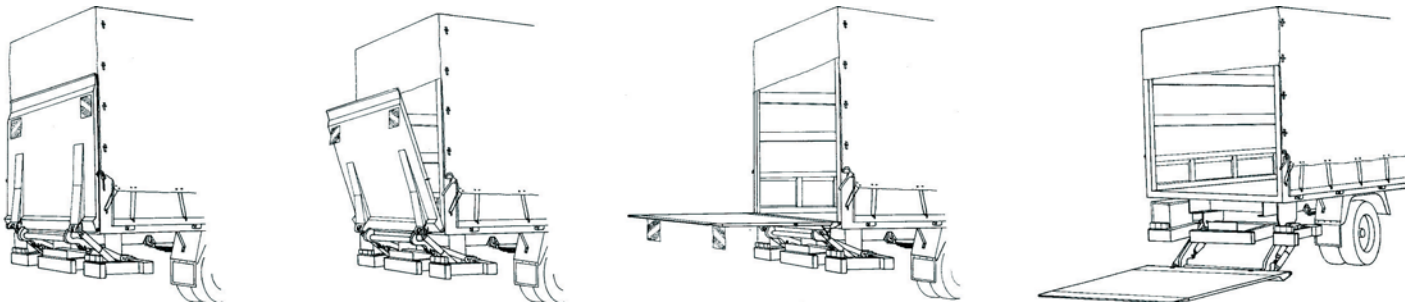


# L SERIES

## HEAVY DUTY CONVENTIONAL TAIL LIFTS

Perfection in every detail



- **Less weight - more payload**
- **Easy & quick installation**
- **Long life - low maintenance**

AHT's L series of tail lifts consists of a superior lift-and-tilt four cylinder system. Cylinders are mounted inside the lift arms and ensure the stable operation of the platform, even with an uncentred load.

All models are completely assembled, adjusted and tested before leaving the factory. Mounting brackets that simply slide into place enable effortless installation.

**Gough Transport  
Solutions**

'QUALITY HYDRAULIC & TRANSPORT EQUIPMENT'



Part No.	Model	Mechanism	Platform	Capacity kg	Load centre mm	Platform Size W x L mm	Weight kg
L500H50* †	L-500H-ST/AL	Steel	Aluminium	500	600	900 x 1600	145
L100011*	L-1000ST/ST	Steel	Steel	1000	600	2440 x 2000	565
L100030*	L-1000ST/AL	Steel	Aluminium	1000	600	2440 x 1700	420
L100050*	L-1000AL	Aluminium	Aluminium	1000	600	2440 x 1700	318
L150011*	L-1500ST-SS	Steel	Steel	1500	1200	2440 x 2200	597
L150031*	L-1500ST/AL	Steel	Aluminium	1500	600	2440 x 2200	441
L150051*	L-1500AL	Aluminium	Aluminium	1500	600	2440 x 2200	343
L200011*	L-2000ST-SS	Steel	Steel	2000	1100	2440 x 2200	715
L200012*	L-2000ST-SS-B	Steel	Steel	2000	1100	2440 x 2350	738
L200031*	L-2000ST/AL-SS-11	Steel	Aluminium	2000	1100	2440 x 2200	532
L200032*	L-2000ST/AL-SS	Steel	Aluminium	2000	1100	2440 x 2350	545
L250010*	L-2500ST-SS	Steel	Steel	2500	1100	2440 x 2350	760
L250030*	L-2500ST/AL-SS	Steel	Aluminium	2500	1100	2440 x 2350	535

\*1=12V 2=24V † Safety Loading System optional

**Standard Inclusions**

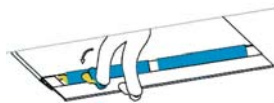
- Three bumper mounts
- Two cables for direct +/- powerpack connection to battery



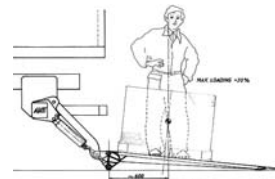
Hand control



Platform security



Roll stops



Safety Loading System

**Optional**

- Added platform length
- 3-Button foot control
- Flashing lights
- Additional hand control
- Automatic levelling
- Platform seals

# Why AHT is the number 1 sold tail lift in Australia

**Safety First**

Cylinders are equipped with mechanical hose-burst valves which are operative during lifting and lowering the platform. The platform will stop immediately if a hose bursts, protecting operator and goods alike.



**Cylinders**

AHT's all-aluminium cylinders are more powerful and weigh less. They have been tested to 800,000 cycles without changing seals and are noiseless in operation at all temperature ranges. Their ceramic-coated pistons, and high resistance to salt water and other corrosive substances, ensure a long life span.



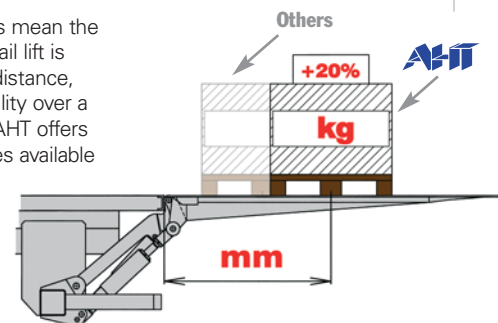
**Powerpack**

Platform lift is achieved by the compact and fully integrated powerpack. Its four-button remote control, for Up and Down operation, is equipped with a cord pull-out protector to prevent electrical shorts and other damage.



**Load centres**

Increased load centres mean the rated capacity of the tail lift is effective at a greater distance, providing more versatility over a range of load types. AHT offers the largest load centres available on the market.



**Ph: 1300 300 375**  
**AUSTRALIA WIDE**  
[www.goughtransport.com.au](http://www.goughtransport.com.au)

**Gough Transport Solutions**

'QUALITY HYDRAULIC & TRANSPORT EQUIPMENT'

